



South Island Sale Day Update

Liveweights Taken 07/01/2021

Maternal Schedule

Stags selected for this type include strong English/German influence of 50% or more

Lot	Tag	Sire	Dam	W12eBV October 2021	EMAceBV October 2021	CDeBV October 2021	Estimated loin weight	EMA	Weaning weight	11 month weight	15 month weight	Velvet Weight	Velvet Grade	Sale Day Weight
1	881	Churchill	WF 825/13	24.18	-0.17	-5.66	6.30	44.53	68	143	180	3.4	A2s	244
2	670	Churchill	WF 659/15	20.19	-0.30	-7.22	6.21	40.88	82	145	183	2.6	A1S	230
3	774	Cardrona	WF 529/14	18.27	1.66	-5.52	5.67	41.91	72	122	150	3.4	A2s	212
4	590	Edward	WF 571/13	17.75	1.22	-4.29	6.68	44.02	72	134	168	4.2	AM2	236
5	584	Churchill	WF 164/08	14.25	1.00	-2.98	6.09	41.21	69	130	168	2.7	B1S	231
6	702	Big Geoff	WF 491/15	17.46	1.14	-8.62	5.87	40.29	69	136	183	3.4	A2S	245
7	692	Big Geoff	WF 481/16	16.94	0.85	-6.51	5.20	38.45	70	134	169	3.5	SA2	216
8	554	Big Geoff	WF Maternal	15.62	0.45	-5.48	5.87	40.89	66	152	194	3.2	A2s	259
9	644	Big Geoff	WF 2029/09	14.03	1.98	-6.78	6.31	43.94	63	136	184	3.4	A2S	246
10	440	Big Geoff	WF 851/16	14.81	1.54	-8.29	5.21	39.15	62	121	144	1.8	C2S	210
11	372	Edward	WF 469/15	16.39	1.01	-5.22	4.98	36.27	66	131	158	2.5	A2S	211
12	738	Megarock	WF 719/16	15.10	0.21	-5.63	5.49	38.23	68	131	150	3.9	A2S	214
13	416	Megarock	WF 497/16	13.80	-0.34	-4.82	5.48	38.20	64	125	169	3.6	A2S	229
14	200	Cardrona	WF 371/15	13.71	-0.07	-2.68	5.75	39.48	63	127	166	3.7	A2S	218
15	730	Maple	WF 471/16	12.53	0.44	-1.22	6.64	42.01	72	141	189	4.2	SA2	250
16	718	Maple	WF 535/16	11.30	0.75	-2.83	5.82	38.84	63	126	174	3.7	SA2	221
17	574	Rock Me	WF 117/07	13.08	0.43	-4.51	6.51	42.29	69	134	181	3.6	A2S	245
18	666	Rock Me	WF 211/09	11.12	0.09	-3.50	4.93	33.86	69	120	155	3.6	A2S	197
19	448	Maple	WF 619/16	9.55	-0.21	-3.26	4.47	34.66	58	126	154	5.4	SA2	207
20	564	Rock Me	WF 124/05	8.91	-0.19	-3.02	6.28	39.71	69	131	165	WITHDRAWN	-	-
21	698	Maple	WF 469/16	8.38	-0.24	-1.59	5.19	36.19	69	130	166	3.6	A2S	210
22	412	Maple	WF 881/16	4.79	0.44	-2.88	4.44	34.98	56	116	143	5.6	SA2	190
23	704	Maple	WF 739/16	8.22	-0.62	-2.57	4.41	32.62	66	125	157	3.9	A2s	201
24	406	Maple	WF 645/16	7.22	0.00	-2.90	4.90	34.65	59	119	137	3.1	B2S	195
25	254	Cardrona	AR 39/15	12.22	-0.64	-1.44	5.22	37.45	63	122	159	4.6	SA2	205
26	248	Cardrona	AL 229/14	10.64	-0.59	-1.58	5.44	39.62	67	123	161	3.4	A2s	209
27	358	Cardrona	WF 277/14	8.57	-1.66	-0.82	4.07	29.22	65	124	153	6.9	SA3/NT	201
28	236	Cardrona	WF 935/14	7.76	-0.51	-1.46	4.96	35.61	60	123	150	4.1	SA2	205
29	904	Ali	WF 303/17	9.10	-1.18	-2.13	4.23	31.28	59	121	146	3.6	A2S	200
30	472	Peel	WF 455/14	9.35	-0.87	-3.09	4.32	30.53	62	127	155	3.5	A2S	205
31	426	Big Geoff	WF 887/16	13.66	-0.24	-6.91	4.43	32.28	66	127	157	3.1	A2s	195
32	739	Megarock	WF 621/16	10.11	0.43	-4.49	3.88	29.13	65	125	155	WITHDRAWN	-	-

Lot 1 | Tag 881

Type : Maternal

Sire - Churchill



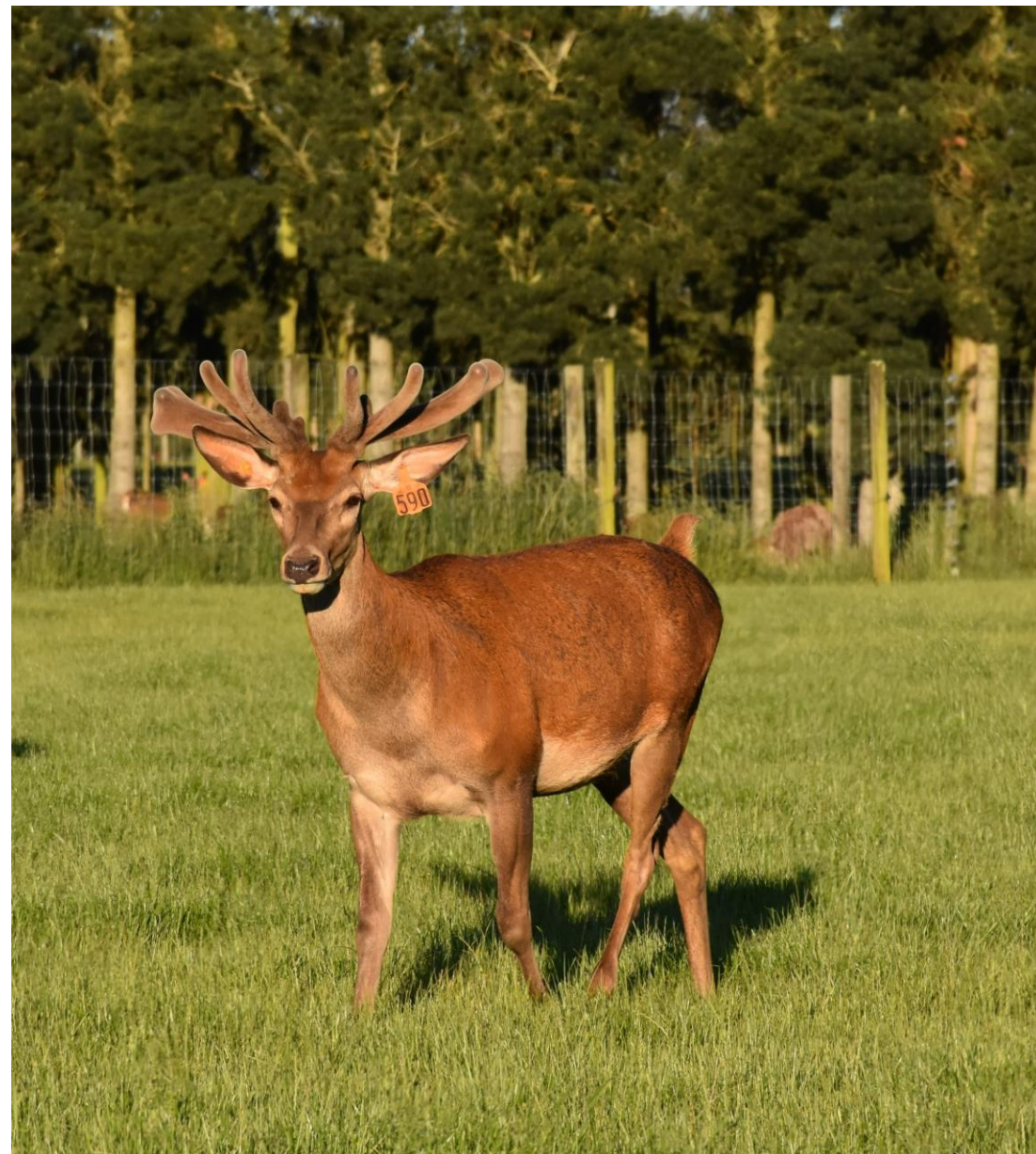
Sale Day Weight: 244 kg

Velvet: 3.4 kg A2S

Lot 4 | Tag 590

Type : Maternal

Sire - Edward



Sale Day Weight: 236 kg

Velvet: 4.2 kg AM2

Lot 8 | Tag 554

Type : Maternal

Sire – Big Geoff



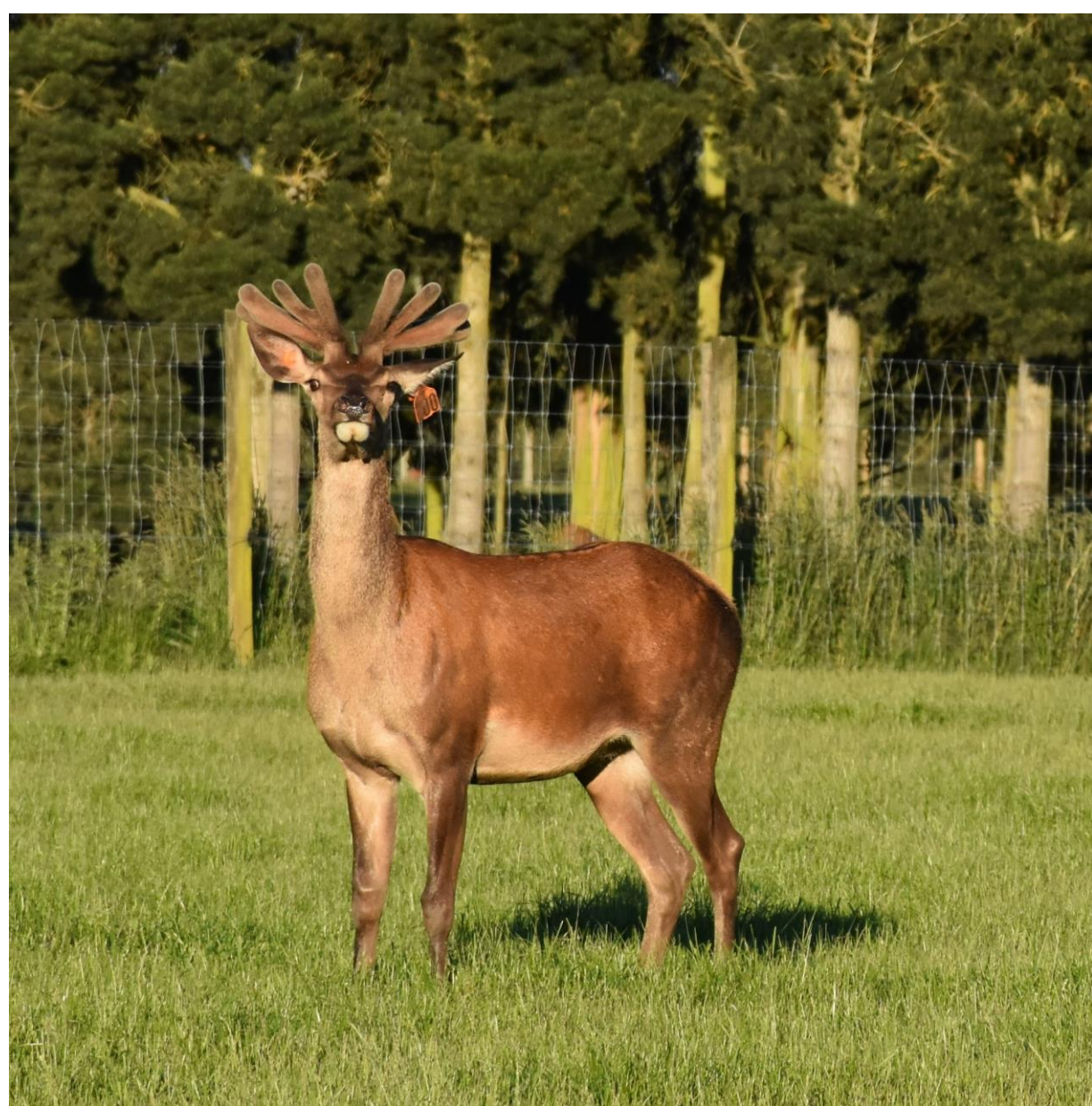
Sale Day Weight: 259 kg

Velvet: 3.2 kg A2S

Lot 14 | Tag 200

Type : Maternal

Sire – Cardrona



Sale Day Weight: 218 kg

Velvet: 3.7 kg A2S

Lot 15 | Tag 730

Type : Maternal

Sire – Maple



Sale Day Weight: 250 kg

Velvet: 4.2 kg SA2

European Schedule

Lot	Tag	Sire	Dam	W12eBV October 2021	EMAceBV October 2021	CDeBV October 2021	Estimated loin weight	EMA	Weaning weight	11 month weight	15 month weight	Velvet Weight	Velvet Grade	Sale Day Weight
100	982	WF 756/17	WF 803/17	30.30	1.04	-7.99	4.89	34.10	57	148	190	3	A2S	245
101	696	Mortlach	WF 533/15	28.92	1.56	-5.52	7.87	48.51	86	166	219	3.8	B1M	275
102	688	Mortlach	WF 805/16	27.08	-0.07	-4.49	5.23	34.45	67	144	183	2.7	B2S	241
103	708	Mortlach	WF 577/16	23.72	1.74	-4.89	6.59	44.61	77	149	186	3.1	A2s	237
104	552	Big Don	WF 155/08	23.34	1.95	-2.34	7.00	46.12	76	154	201	4.3	A2S	255
105	780	Mortlach	WF 470/12	23.27	-0.05	-5.47	5.15	36.39	74	143	173	2.1	A2S	225
106	624	Mortlach	WF 221/08	22.18	-1.16	-1.94	5.65	37.19	76	150	190	3.6	A2S	232
107	714	Mortlach	WF 651/16	22.06	1.22	-5.56	6.61	44.12	71	143	183	3.4	B2S	260
108	800	Tui	LDC 314/08	22.92	-0.57	-6.97	6.08	42.34	76	149	185	2.3	C1S	220
109	830	Tui	WF 698/12	20.04	-0.58	-6.79	4.89	35.62	67	135	176	4	A2S	236
110	600	Big Don	WF 557/13	20.45	2.03	-2.81	6.80	43.02	78	142	182	2	B2S	252
111	814	Big Don	WF 419/13	19.40	0.65	-5.82	5.37	36.34	70	130	169	4	A2S	220
112	662	Big Don	WF 441/14	17.88	1.24	-2.82	6.91	47.43	81	149	194	4.5	SA2	RETAINED
113	972	Big Don	WF 685/17	26.52	1.31	-6.29	5.85	38.52	65	145	166	2.4	A2S	236
114	798	WF 144/05	WF 1179/11	19.13	1.78	-5.06	6.54	44.94	68	134	177	2.3	B2S	238
115	656	Mortlach	WF 39/07	19.01	-0.39	-2.10	4.33	34.66	70	140	174	2.1	B1S	231
116	608	Vova	WF 1/09	12.70	0.00	-5.00	6.45	42.50	66	137	179	2.6	C2S	266
117	596	Big Don	WF 565/13	20.72	2.69	-4.97	6.47	45.73	80	140	185	3.1	B2s	235
118	790	WF 144/05	LDC 830/10	17.38	1.29	-3.92	5.70	38.61	72	128	163	1.8	B2S	218
119	614	Icon	WF 62/10	16.54	2.17	-3.71	4.88	39.77	70	132	162	3	A2S	200
120	572	Icon	WF 306/09	13.55	2.31	-3.98	4.95	37.18	76	134	169	2.8	B2S	210

Lot 101 | Tag 696

Jameson

Type : European

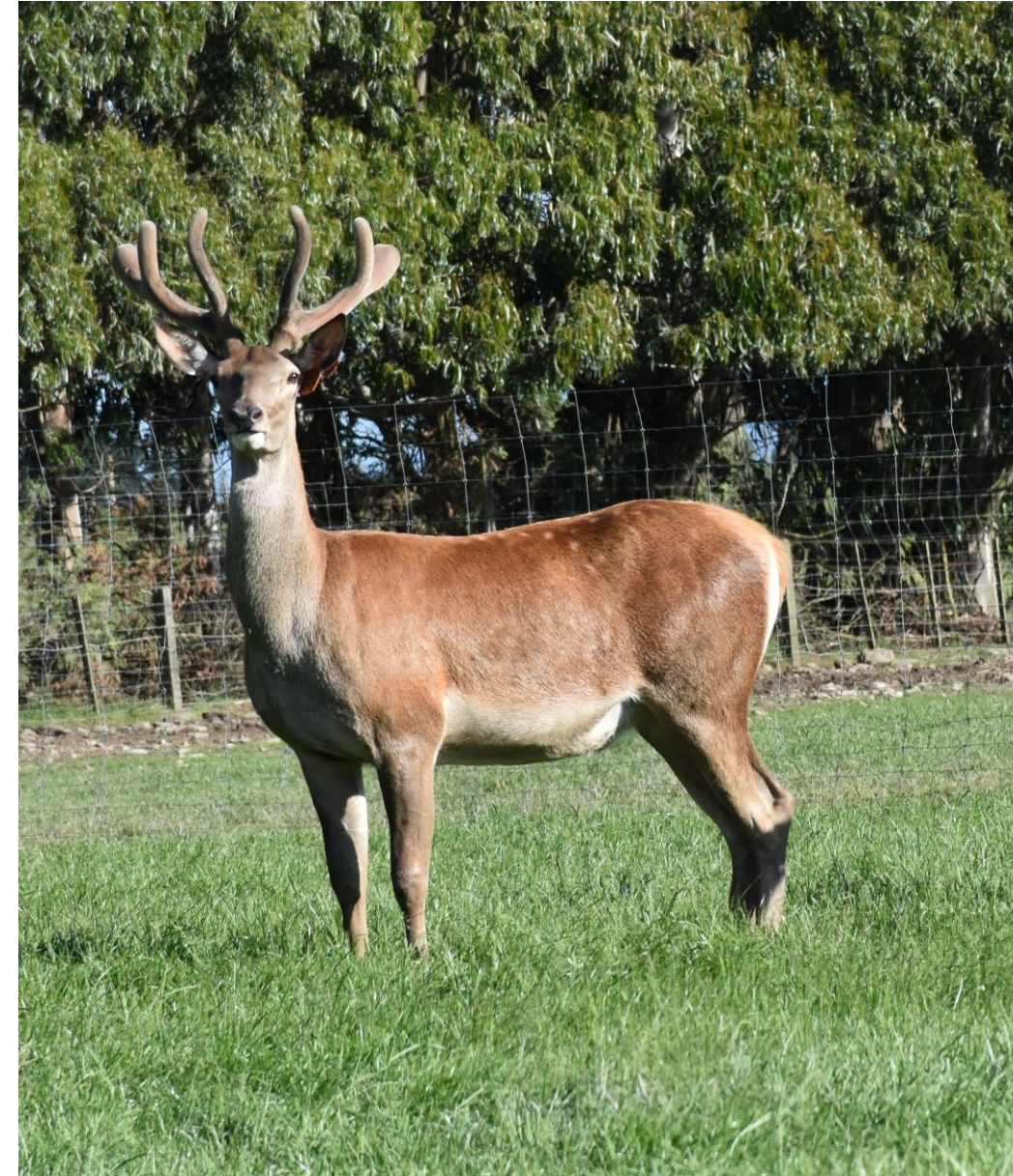
Sire – Mortlach

Jameson is an exciting venison stag with outstanding growth rate.

Retained by Wilkins Farming Co, Jameson is sired by Mortlach out of a hind containing some of our very best European bloodlines.

Jameson scanned **NO.1 for Eye Muscle Area (EMA) 48.51** at ultrasound scanning, and his impressive weights demonstrate unrivalled growth i.e.: **86 kg at weaning** and a huge **219 kg at 15 months**. At this time we understand these measures for growth and EMA are the highest numbers ever recorded for these traits in European red deer.

His key traits are sure to further enhance your venison production. We eagerly await his impact within our breeding programmes and his continued performance as he matures.



Sale Day Weight: 275 kg

Velvet: 3.8 kg B1M

Lot 104 | Tag 552

Type : European

Sire – Big Don



Sale Day Weight: 255 kg

Velvet: 4.3 kg A2S

Lot 107 | Tag 714

Type : European

Sire – Mortlach



Sale Day Weight: 260 kg

Velvet: 3.4 kg B2S

Lot 116 | Tag 608

Type : European

Sire – Vova



Sale Day Weight: 266 kg

Velvet: 2.6 kg C2S

Lot 119 | Tag 614

Type : European

Sire – Icon



Sale Day Weight: 200 kg

Velvet: 3 kg A2S



Lot 6 Tag 702 3.4kg A2S
Big Geoff x WF 144/05



Lot 14 Tag 200 3.7kg A2S
Cardrona x Mighty Image



Lot 15 Tag 730 4.2kg SA2
Maple x Rock Me



Lot 19 Tag 448 5.4kg SA2
Maple x Rock Me



Lot 22 Tag 412 5.6kg SA2
Maple x Salzburg



Lot 25 Tag 254 4.6kg SA2
Cardrona x Victrix



Lot 104 Tag 552 4.3kg A2S
Big Don x WF 225/06



Lot 106 Tag 624 3.6kg A2S
Mortlach x Megamilian

VELVET OF NOTE

